

Hyload^{HL}

BL30X Articulated Mini Backhoe Loader

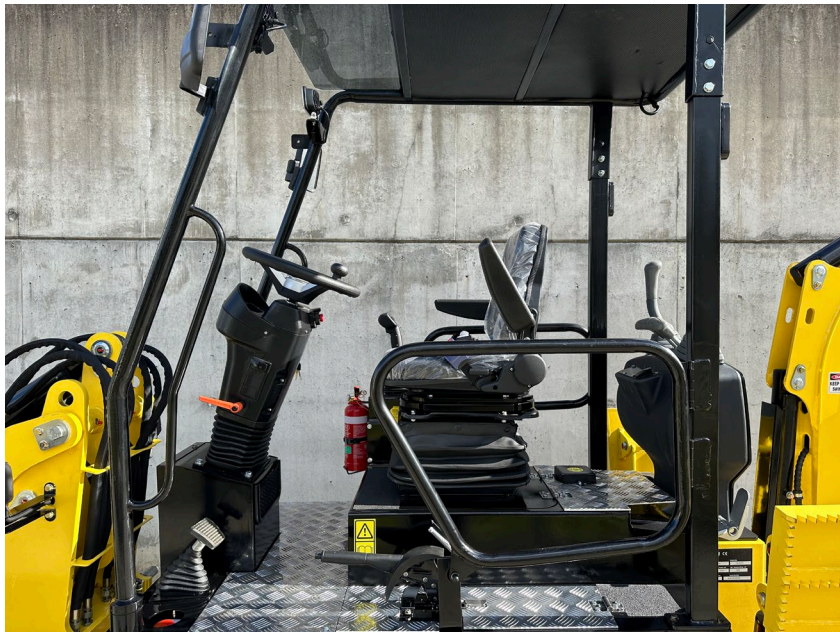


- ❖ *Hydro Static 4WD*
- ❖ *Kubota Euro V Engine*
- ❖ *Hydraulic Quick Hitch*
- ❖ *Articulated Steering*
- ❖ *Ergonomic Operators Station*
- ❖ *Heavy Duty Structural compact Design*

Powered By

Kubota

Model	BL30X	
Machine Data	Machine weight (kg)	1800
	Machine weight with bucket (kg)	1900
	Overall Length with Bucket (mm)	4500
	Overall Length with Excavator Ext (mm)	7101
	Overall Width (mm)	1100
	Rated Lift load (kg)	800
	Dump height (mm)	2700
	Wheel base (mm)	1250
	Min Turning Radius (mm)	2400
	Turning Angle (degrees)	45
Excavator Data	Max Reach Height (mm)	3200
	Max Unloading Height (mm)	2700
	Max Digging Depth (mm)	2500
Engine Data	Make	Kubota (Made in Japan)
	Fuel Type	Diesel
	Filtration	Donaldson
	Model	D1105
	Cylinder	3
	Displacement (cm ³)	1123
	EU Emission Stage	Tier 4 Final
	Max Power kw/HP	22 / 28
	Rated Speed (rpm)	2200
Hydraulic System	Main Working Pump Type x 2	High Flow Dual/Variable Displacement
	Make	Bondioli (Made in Italy)
	Drive System Pressure (Bar)	350
	Drive System Flowrate (L/min)	84
	Working System Pressure (Bar)	200
	Working System Flowrate (L/pm)	70
	Auxiliary Pump Type	Gear
	Make	Parker (Made in USA)
	Auxiliary Circuit Pressure (Bar)	190
	Auxiliary Circuit Flowrate (L/pm)	52
Drive Motor Type x 2	Dual/Variable Displacement	
Travell	Type	Hydro static 4WD
	Speed (km/h)	0-12
	Traction	LSD x 2
Quick Connectors	Make	Stauff (Germany)
	Type	Flat Faced G1/2, G3/8 (Quick release no leak type)
Hitch	Type	Euro Hydraulic Quick Hitch
	Function	Hydraulic
Fluid Capacities	Fuel Tank (L)	30
	Engine oil (L)	4.7
	Hydraulic oil (L)	30
Tyre	Make	Advance Tubeless
	Spec	26x12-12
Electrical Data	Operating Voltage (V)	12



Ergonomic Operator station with pilot joystick controls and levers to control all implements and working attachments. Optional Multi-functional joystick available . LCD Instrument Display with programmed service and audio-visual alarm systems. All visible parameters such as RPM, Fuel, Hours, Engine Temperature and more

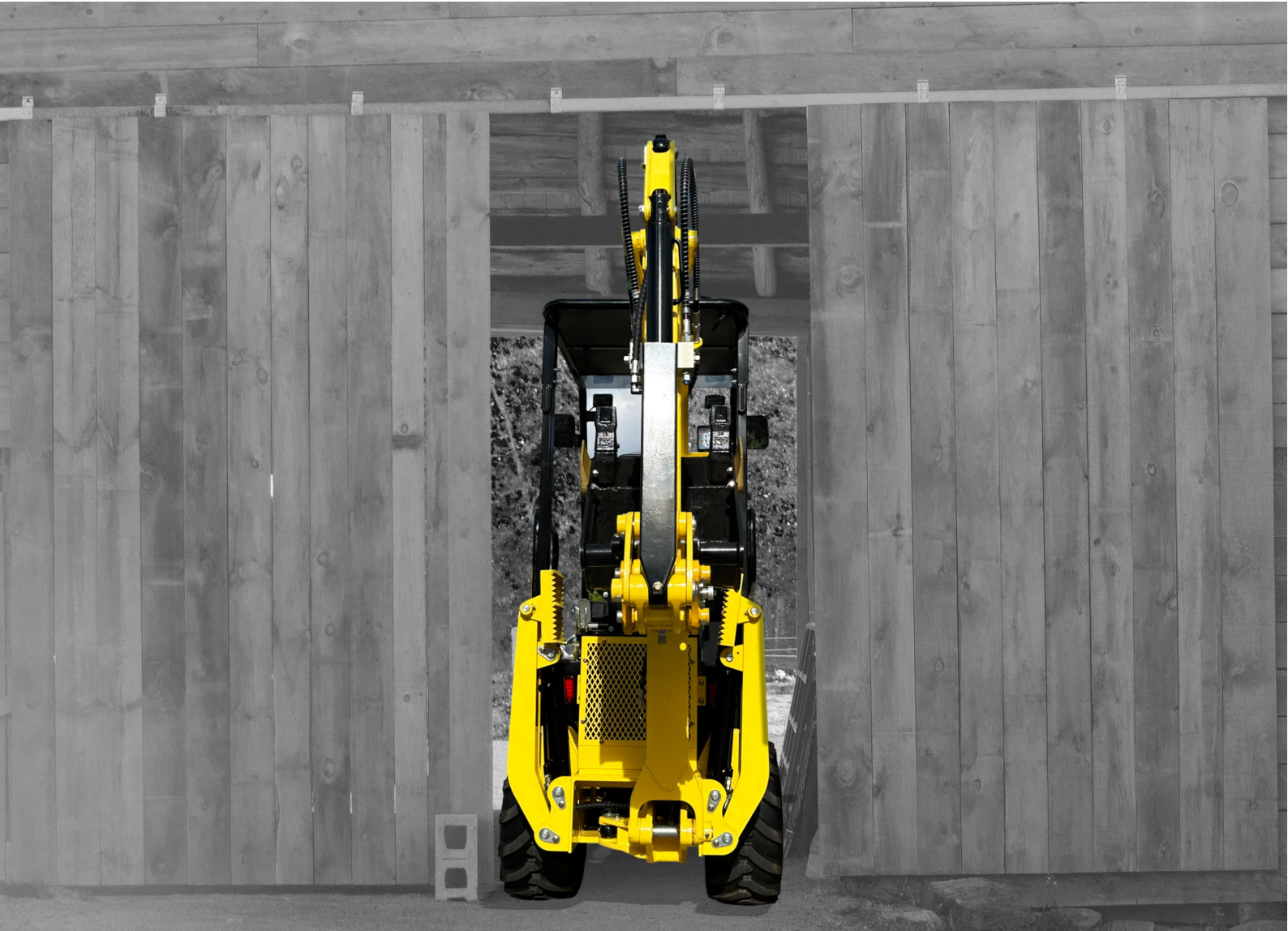


Industry Standard Euro Type Hydraulic operated quick hitch, change rapidly within the vast selection of working attachments

Ergonomic Excavator Controls and operation station offers excellent visibility and enhanced safety on work site.



BL30X



1) According to 2000/14/EG & appendixes. (2) According to 2000/14/EG & appendixes.
(3) According to ISO 6396. (4) According to ISO 8041. *Depending on the engine variant.

A vouch for technical excellence, for powerful and reliable machines and for quality "Designed in USA". In their respective domain, they exceed the currently applicable emission standards. According to the emission regulations of different countries, you have the choice to select the right engine type for your purpose.

Specifications are subject to change without notice.